

**A57 Link Roads**

**TR010034**

**6.4 Environmental Statement  
Figure 7.9xi - Photomontages**

APFP Regulation 5(2)(a)

Planning Act 2008 Infrastructure Planning (Applications: Prescribed Forms  
and Procedure) Regulations 2009

January 2022

## Infrastructure Planning

### Planning Act 2008

#### The Infrastructure Planning (Examination Procedure) Rules 2010

### A57 Link Roads

#### Development Consent Order 202[x ]

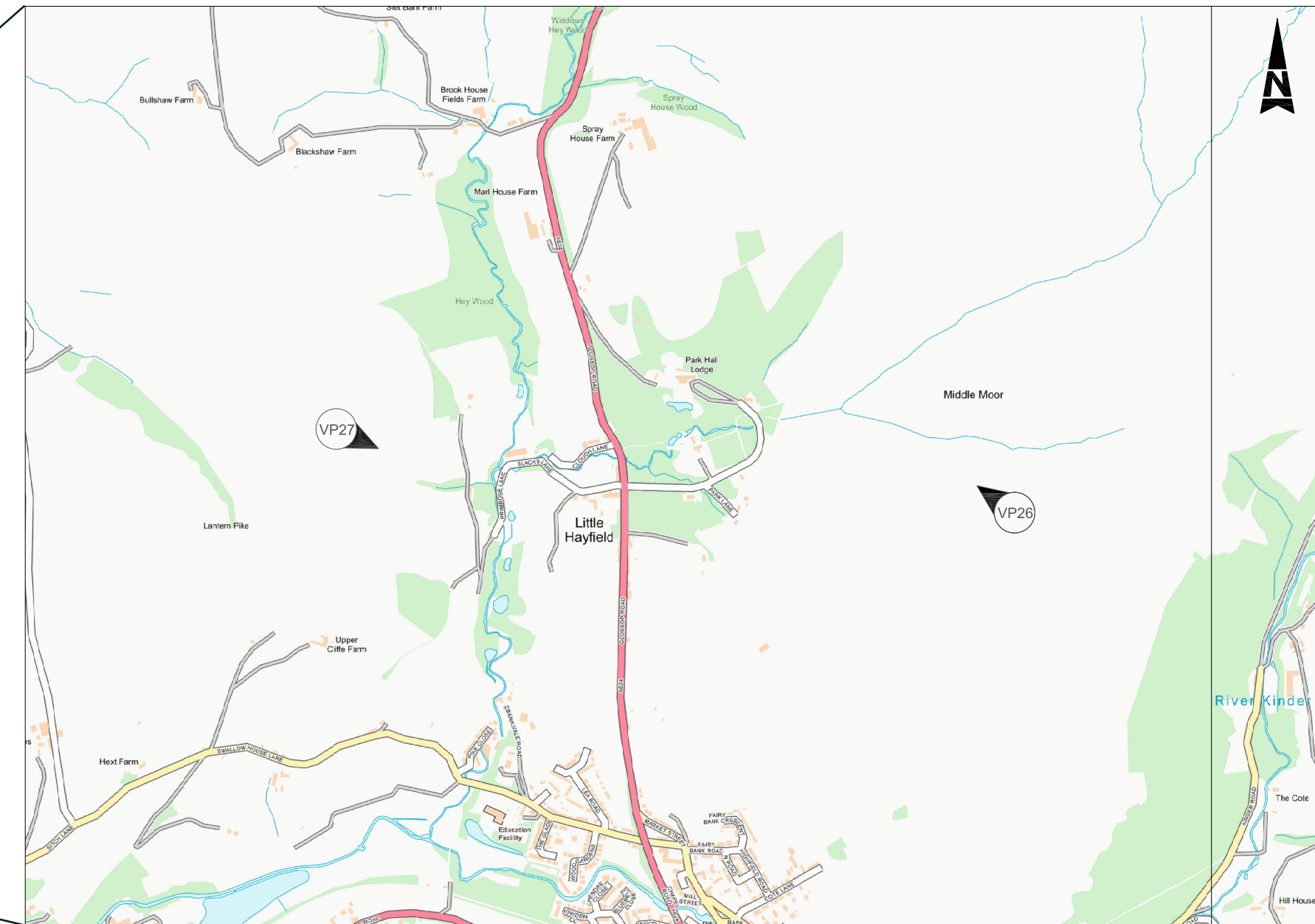
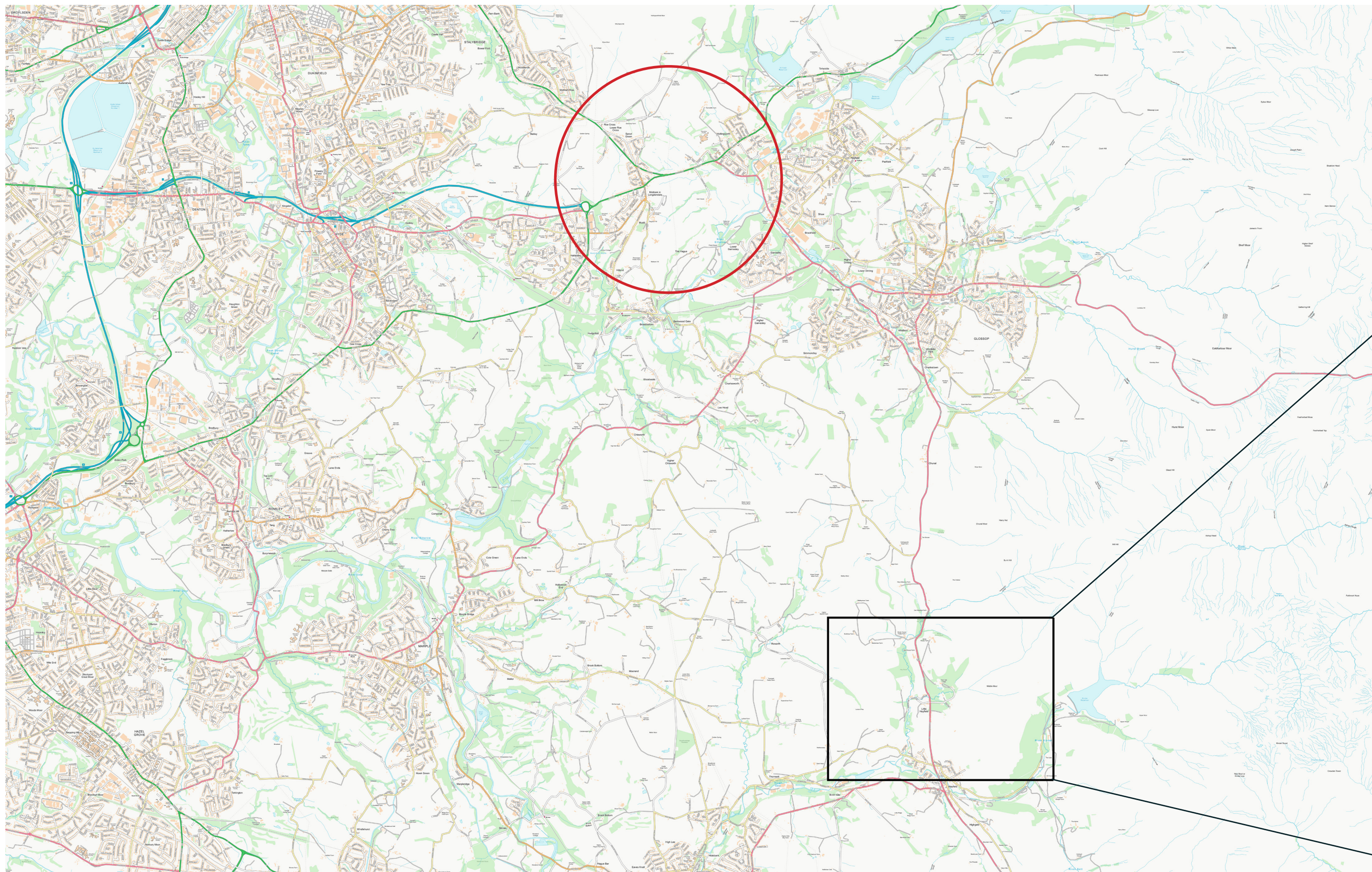
---

#### 6.4 Environmental Statement Figure 7.9xi - Photomontages

---

<b>Regulation Number:</b>	Regulation 5(2)(a)
<b>Planning Inspectorate Scheme Reference</b>	TR010034
<b>Application Document Reference</b>	TR010034/APP/6.4
<b>Author:</b>	A57 Link Roads Project Team, National Highways and Atkins

<b>Version</b>	<b>Date</b>	<b>Status of Version</b>
1	January 2022	Deadline 2
0	June 2021	DCO Application



**Site Location Plan**

This map is based on Ordnance Survey material with the permission of Ordnance Survey on behalf of the Controller of Her Majesty's Stationery Office. © Crown copyright. Unauthorised reproduction infringes Crown copyright and may lead to prosecution or civil proceedings. Highways England 100030649, 2020.

Drawing Suitability	Status
PUBLISHED	

Description						
Status	Revision	Drawn	Checked	Reviewed	Authorised	Issue Date
PUBLISHED						
Status	Revision	Drawn	Checked	Reviewed	Authorised	Issue Date
	0	JW	... I	EM	PG	15/07/20

Client



Project Title	The A57 Link Roads (previously known as Trans Pennine Upgrade) (the scheme)		
Drawing Title	Figure 7.9 - APP 7.1 Viewpoint Location Plan (Sheet 40 of 42)		

Drawing Number	TR010029/APP/6.2	Project	Originator	Volume	-
Location	-	Type	Role	Number	-
Original Size:	A1	Scale:	N/A	Project Ref. No:	
Sheet:	of	Rev:	1		



Snake Path

90 degree cylindrical photograph  
 Page should be printed at A1 width, A3 height (841 x 297mm) and viewed at a comfortable arm's length (approx. 500mm).

Drawing Suitability	Status
PUBLISHED	

Description View from Pennine Bridleway (HP15/18/1) (within Peak District National Park) View from Lantern Pike / Open Access Land

Status	Revision	Drawn	Checked	Reviewed	Authorised	Issue Date
PUBLISHED						
	0	JW	...	EM	PG	15/07/20

Client



Project Title  
 The A57 Link Roads (previously known as Trans Pennine Upgrade) (the scheme)

Drawing Title  
 Figure 7.9 - Winter Photograph Illustrative viewpoint – demonstrating indirect effect within the PDNP Viewpoint 26 (Sheet 41 of 42)

Drawing Number	TR010029/APP/E.2	Volume	-
Project		Originator	
Location		Type	
Original Size: A1	Scale: N/A	Project Ref. No:	
		Sheet: of	Rev: 0



Hayfield

90 degree cylindrical photograph  
 Page should be printed at A1 width, A3 height (841 x 297mm) and viewed at a comfortable arm's length (approx. 500mm).

Drawing Suitability	Status
PUBLISHED	

Description: View from Snake Path (HP15/64/1) (within Peak District National Park) View from Middle Moor Open Access Land						
Status	Revision	Drawn	Checked	Reviewed	Authorised	Issue Date
	1	JW	NH	EM	PG	13/01/22

Description: PUBLISHED						
Status	Revision	Drawn	Checked	Reviewed	Authorised	Issue Date
	0	JW	... I	EM	PG	15/07/20

Client



Project Title  
 The A57 Link Roads (previously known as Trans Pennine Upgrade) (the scheme)

Drawing Title  
 Figure 7.9 - Winter Photograph Illustrative viewpoint – demonstrating indirect effect within the PDNP Viewpoint 27 (Sheet 42 of 42)

Drawing Number	TR010029/APP/6.2	Volume	-
Project	Originator	Type	Role
Location		Type	Role
Original Size: A1	Scale: N/A	Project Ref. No:	Sheet: of Rev: 1

© Crown copyright (2022).

You may re-use this information (not including logos) free of charge in any format or medium, under the terms of the Open Government Licence. To view this licence:

visit [www.nationalarchives.gov.uk/doc/open-government-licence/](http://www.nationalarchives.gov.uk/doc/open-government-licence/)  
write to the Information Policy Team, **The National Archives, Kew, London TW9 4DU**,  
or email [psi@nationalarchives.gsi.gov.uk](mailto:psi@nationalarchives.gsi.gov.uk).

Printed on paper from well-managed forests and other controlled sources.

Registered office Bridge House, 1 Walnut Tree Close, Guildford GU1 4LZ  
National Highways Limited registered in England and Wales number 09346363